

# AC-VF380

## Manage Your Workforce and Access Control Effortlessly

### Introduction

AC-VF380 is a face identification T&A terminal with simple access control functions, which can connect with 3rd party electric lock, door sensor, and exit button. Face, PIN and RFID recognition modes are available. AC-VF380 captures the relative position, size, and shape of the user's eyes, nose, cheekbones, and jaw features to ensure accuracy of the identification. All the settings can be easily done on 3-inch TFT touch screen. With a AC-VF380 you can manage your workforce and access control efficiently.



社名/新光 株式会社  
SK-COMPANY CO.,LTD

本社所在地/〒173-0032  
東京都板橋区大山西町 2 - 3 SKビル 1F

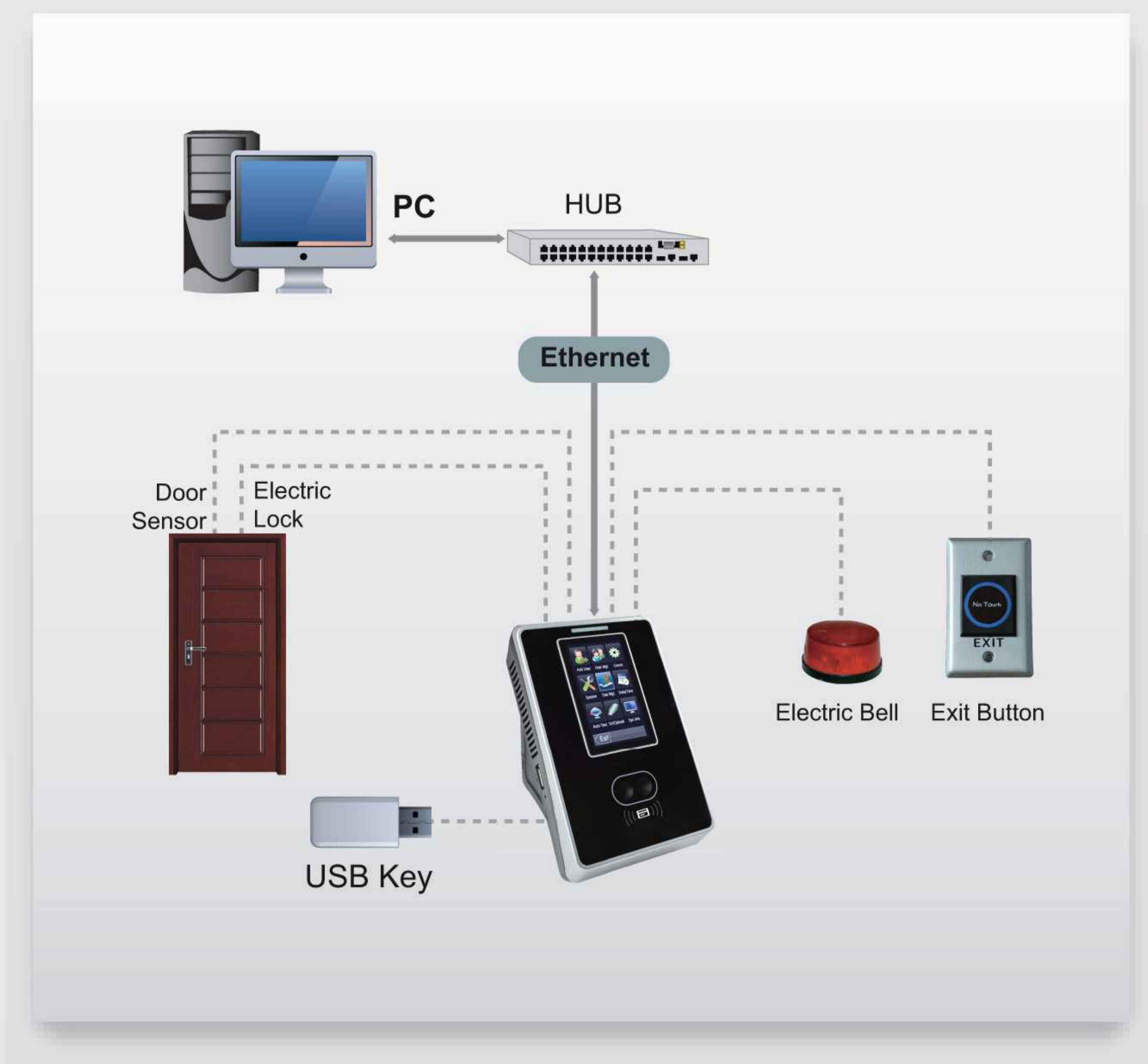
TEL/+81-8032785551  
FAX/+81-33972-0689



## Features:

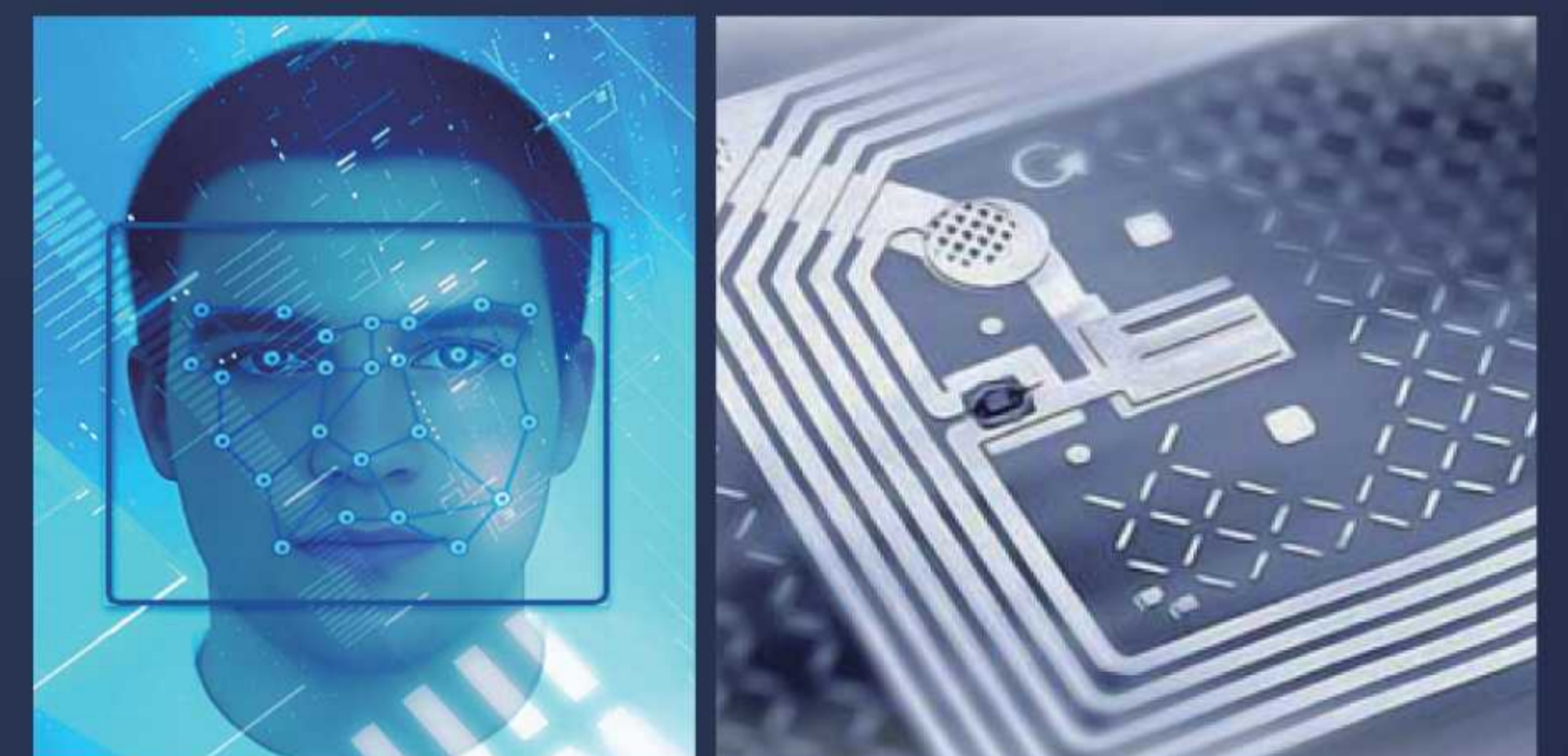
- \* Elegant ergonomic design.
- \* Ethernet and USB host communication.
- \* 3-inch TFT touch screen, T9 Input, and 9 Digit User ID.
- \* Infra-red optical system enables user-identification in poorly lit environment.
- \* Optional with Mifare card module.
- \* Professional face identification algorithm.
- \* 3rd party electric lock, door sensor, and exit button.

## Configuration:



## Specifications:

Display	3-inch Touch Screen
Face Capacity	800(Standard)/1200(Optional)(1:N)
ID Card Capacity	10,000
Logs Capacity	100,000
Communication	Ethernet and USB Host
Standard Functions	ID card, Automatic Status Switch, Self-Service Query, Work Code, T9 Input, 9 Digit User ID, DST, Scheduled-bell, 3rd Party Electric Lock, Door Sensor, Exit Button and Short Message.
Optional Function	Mifare Card
Power Supply	12V/1.5A
Verification Speed	≤1S
Operating Temperature	0°C-45°C
Operating Humidity	20%-80%
Dimensions	104.7*160*36 mm (L*H*D)



社名/新光 株式会社  
SK-COMPANY CO.,LTD

本社所在地/〒173-0032  
東京都板橋区大山西町 2-3 SKビル 1F

TEL/ +81-8032785551  
FAX/ +81-33972-0689